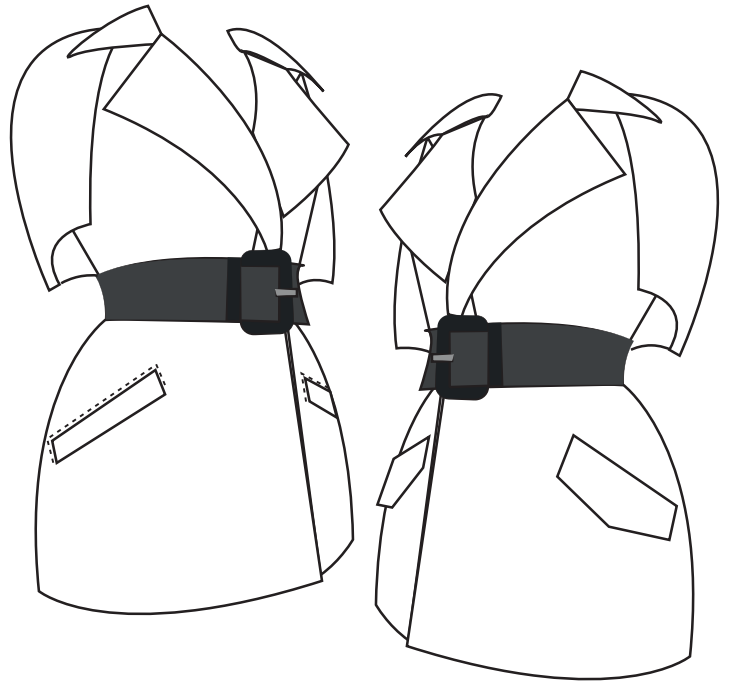


INBHIR NIS WELT POCKET AND CONVERTIBLE COLLAR HACK PACK



INCLUDED:

PATTERN PIECES FOR A BASIC WELT POCKET
PATTERN PIECES FOR A FLAP COVERED WELT POCKET
PATTERN PIECES FOR CONVERTIBLE COLLAR
INSTRUCTIONS ON HOW TO ASSEMBLE

NOT INCLUDED:

WHERE TO PUT YOUR POCKETS - THATS A STYLE CHOICE FOR YOU TO MAKE!

WHAT YOU WILL NEED:

FABRIC FOR YOUR FLAP AND WELT SHOULD BE CUT FROM YOUR MAIN FABRIC.
FABRIC FOR YOUR POCKETS BAGS CAN BE CUT FROM EITHER MAIN OR A LINING.
INTERFACING, LIGHT TO MIDWEIGHT IS ADVISABLE BUT NOT 100% NECESSARY

PIECES CUT ON FABRICS:

1 - ENVELOPE, FOR TRACING	TRACE/CUT 1 ON PAPER
2 - POCKET WELT	CUT 1 PAIR ON MAIN
3 - POCKET BAG 1	CUT 1 PAIR ON MAIN/LINING
4 - POCKET BAG 2	CUT 1 PAIR ON MAIN/LINING
5 - POCKET FLAP	CUT 2 PAIR ON MAIN
	- OR -
6 - UNDER COLLAR	CUT 1 PAIR MAIN, 1 PAIR LINING
7 - UPPER COLLAR	CUT 1 ON FOLD MAIN
	CUT 1 ON FOLD MAIN

PIECES CUT ON INTERFACING:

1 - ENVELOPE	CUT 1 PAIR INTERFACING, ADDING 5MM SEAM AROUND THE ENVELOPE
2 - POCKET WELT	CUT 1 PAIR IF YOUR FABRIC IS UNSTABLE/LIGHT
5 - POCKET FLAP	CUT 1 PAIR IF YOUR FABRIC IS UNSTABLE/LIGHT

If you have never made pockets like this before, then I can't recommend enough that you practice on scraps, ideally scraps of the fabrics you are using.

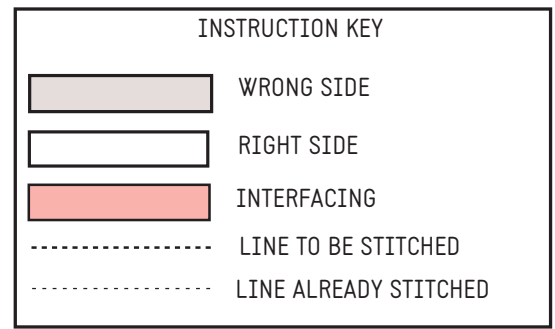
This will help you establish whether you need to use interfacing or not. If you are wanting to cut your pocket on a diagonal, make sure that you practice this same angle on the scraps, if you are on the bias you may need the interfacing to keep the pocket stable.

Other than in step 1 there is no further mention of interfacing, judge for yourself whether your welts or flaps require interfacing before beginning. Ideally you will figure this out after your scrap practice.

WELT POCKET, NO FLAP

- These pieces are sewn with a 1.5cm seam unless otherwise indicated.

- Some seams may require trimming, this is indicated in the instructions.

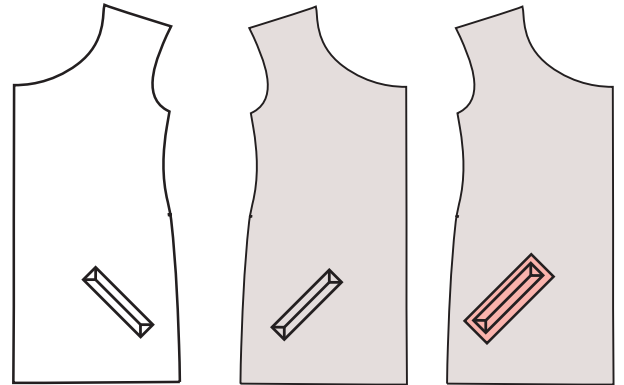


1.

Trace the 'envelope' onto the front of your trench piece once you have decided on pocket placement.

Trace the 'envelope' on the wrong side as well, making sure they are in line, front and back.

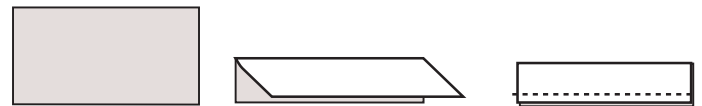
If you are using a lightweight fabric you must stabilise the 'envelope' with interfacing, cut slightly larger than the envelope (approx 5mm additional around the external lines) see diagram on far right.



2.

Press your pocket welt in half lengthways, wrong sides together.

Sew along the raw edges with a 5mm seam to keep them together for the next step.



3.

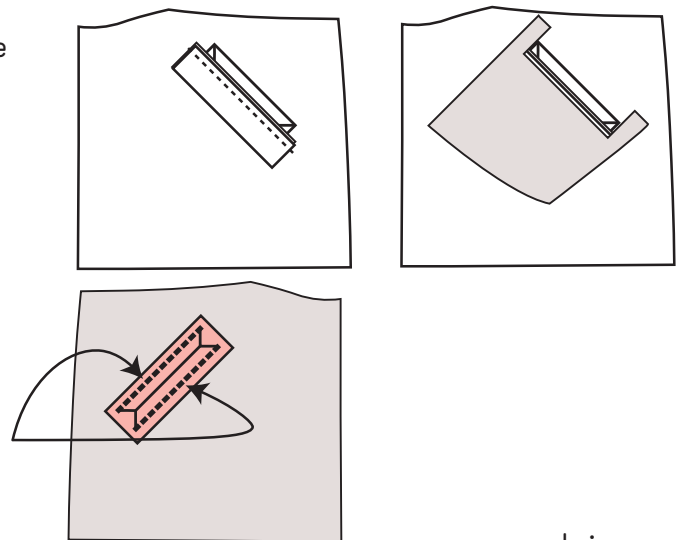
Line the raw edges of your welt along the centre line of the envelope.

Add pocket bag 1, along the same edge as the welt.

The welts and pocket bag will extend beyond the edges of your envelope..

Pin pieces in place and turn to the back side of your trench,

Sew along the top and bottom lines of your envelope only.

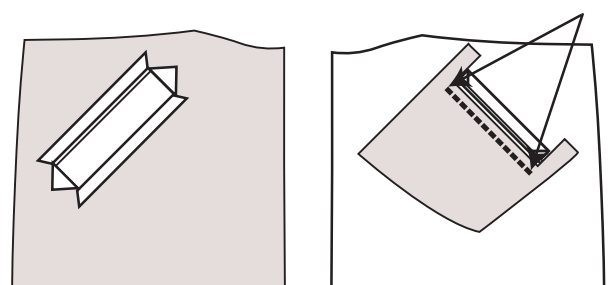


4.

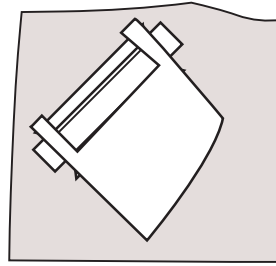
Trim your pocket open carefully, by cutting along the centre line and then along the Y legs right to the very edge of your stitching.

Press the envelope open from the wrong side of trench.

On the right side, you will need to cut down to the stitching on Pocket bag 1.



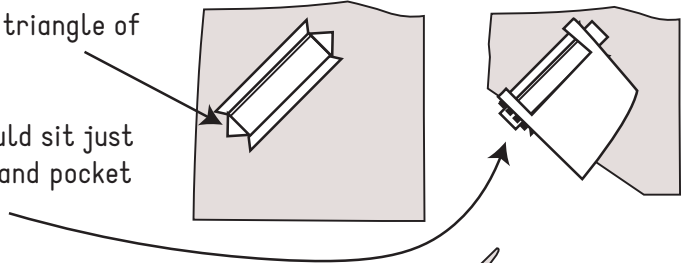
Now turn the welt and bag to the inside of your envelope,
Press everything!



5.

On either side of the envelope you will have a small triangle of fabric.

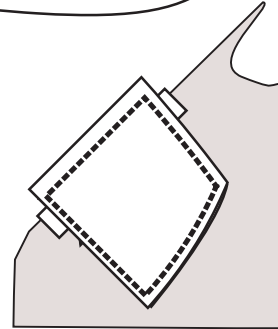
Sew the triangle to the edge of the welt (which should sit just that little bit longer than the envelope remember) and pocket bag 1. Make sure that you do this on both sides.



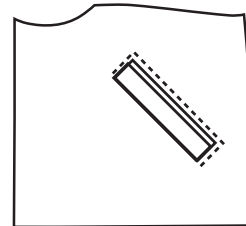
6.

You can now attach pocket bag 2 to finish your pocket off.

Sew along the top edge of your pocket catching your top envelope seam along, or as close as possible to, the previously stitched line, and stitch all around the pocket bags.



Optional finish, you can top stitch along the area shown on the right if you are finding that your fabric is not stable enough to maintain the weight of the pocket flap.



WELT POCKET, WITH FLAP

Follow steps 1 - 2 from page 1 then:

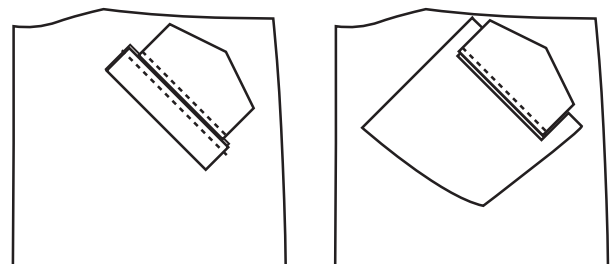
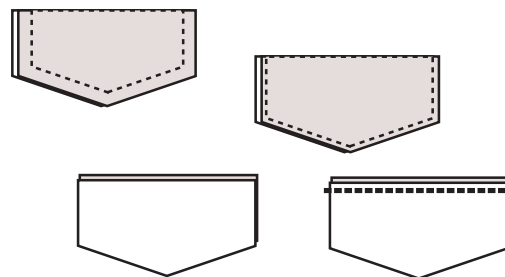
3.

Sew the pocket flaps together with a 1.5cm seam.

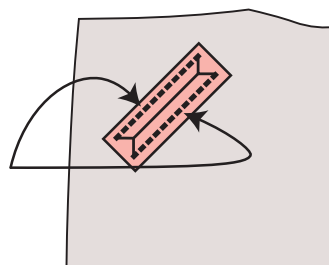
**If you are using lining for one side of the flap, consider interfacing this piece to help with stability.

Once sewn cut the corners and trim the seams down to 5mm.

Turn right side out and press, then sew a small 5mm seam to close the raw edge and stabilise.



Pin pieces in place and turn to the back side of your trench,
Sew along the top and bottom lines of your envelope only.

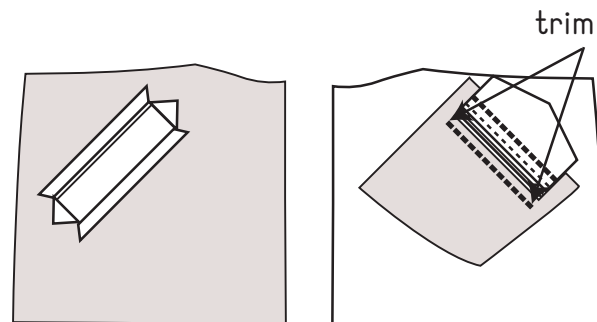


4.

Trim your pocket open carefully, by cutting along the centre line and then along the Y legs right to the very edge of your stitching.

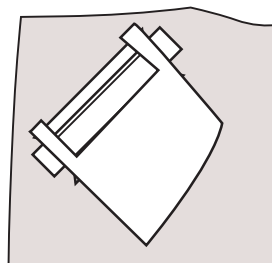
Press the envelope open from the wrong side of trench.

On the right side, you will need to cut down to the stitching on Pocket bag 1.



Now turn the welt and bag to the inside of your envelope, with the flap seam also turning through to wrong side.

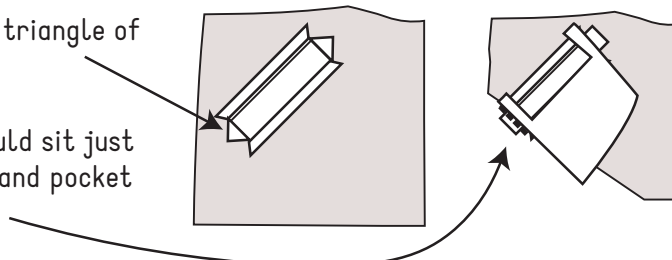
Press everything!



5.

On either side of the envelope you will have a small triangle of fabric.

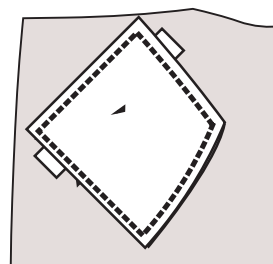
Sew the triangle to the edge of the welt (which should sit just that little bit longer than the envelope remember) and pocket bag 1. Make sure that you do this on both sides.



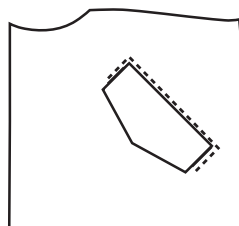
6.

You can now attach pocket bag 2 to finish your pocket off.

Sew along the top edge of your pocket catching your flap seam as close as possible to the previously stitched line, and stitch all around the pocket bags.



Optional finish, you can top stitch along the area shown on the right if you are finding that your fabric is not stable enough to maintain the weight of the pocket flap.



CONVERTIBLE COLLAR FOR V2

On a convertible collar, the upper collar is cut a little bigger and you will need to stretch the under collar a small amount to sew them together; this is to help the roll of the fabric.

Instructions start from where front and back v2 trench pieces have been sewn together.

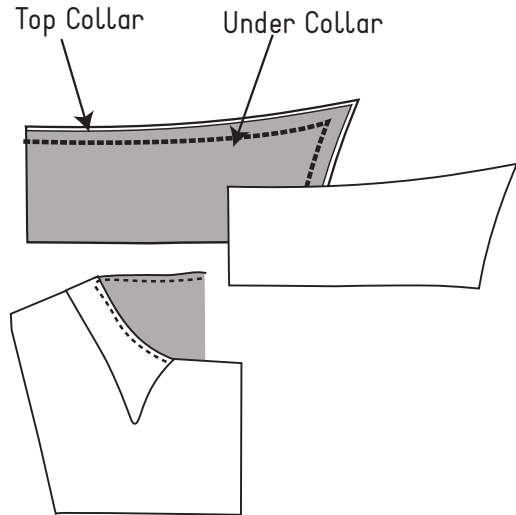
1.

Sew around collar outer edge between the notches, leaving the lower edge open

Clip into seam curves and turn collar right side out and press.

Pin centre back of collar to centre back of Back Trench Piece (2), right sides together.

Pin your collar around the neckline and sew/baste with a 1cm seam.



You can now continue with:

STEP THREE V2 ATTACH LINING TO TRENCH

on page 8 of your Inbhir Nis instruction booklet.

The construction of the lining and placket remain unchanged and it is sewn with a 1.5cm seam, capturing your collar which will be resting against the right side of your trench.