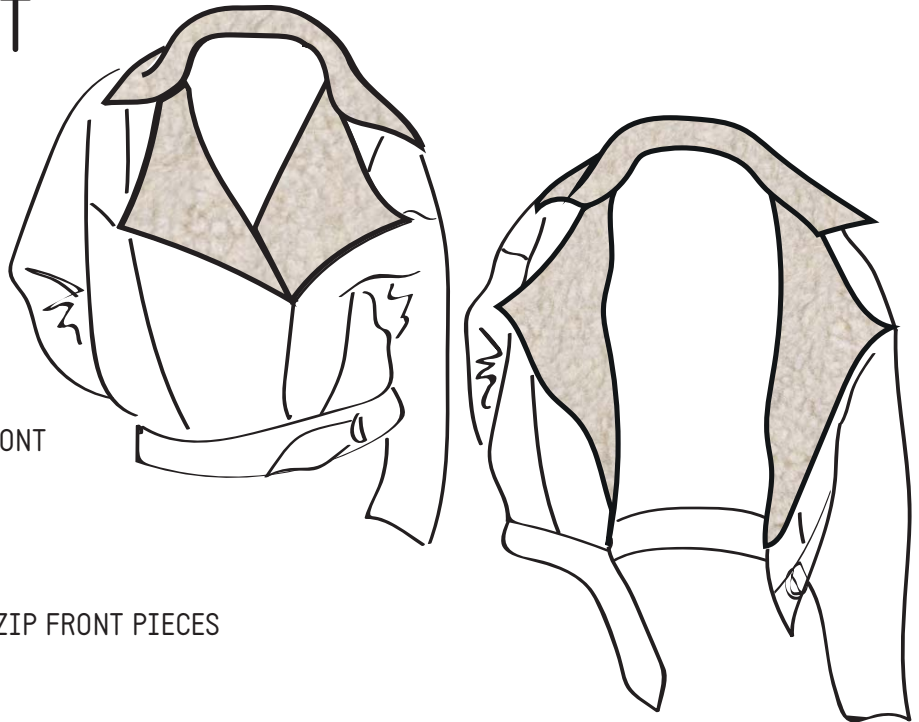


# MARION JACKET

## BIKER ZIP

## HACK PACK



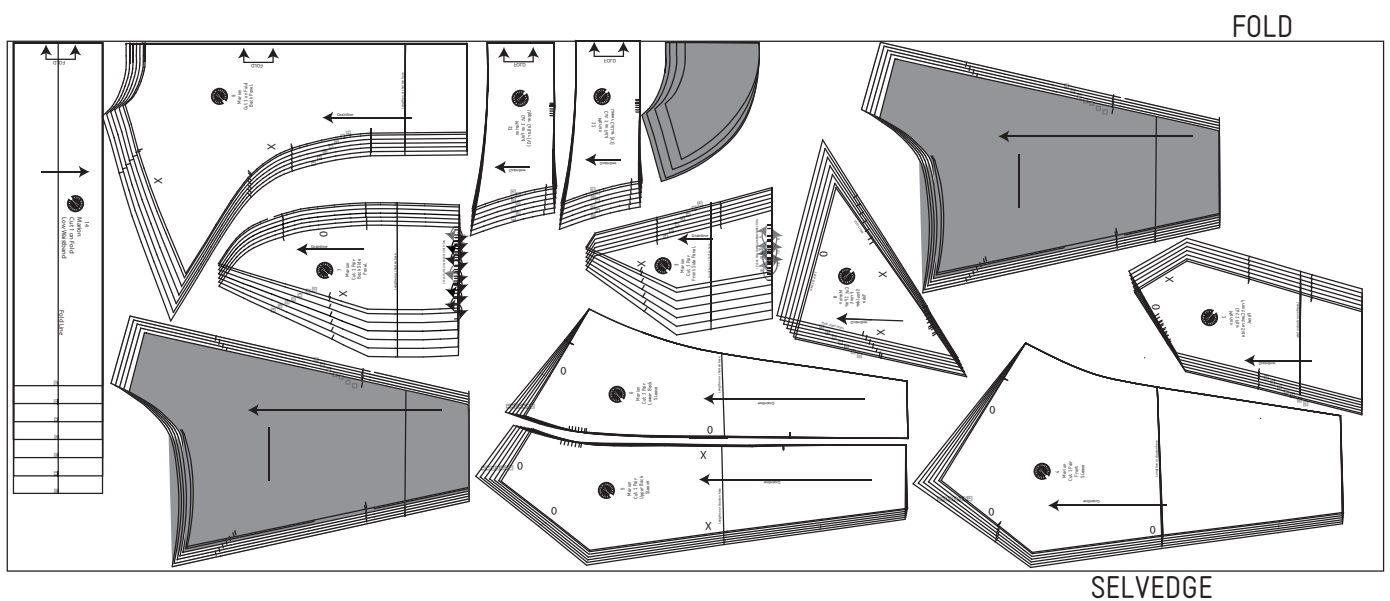
INCLUDED:

PATTERN PIECE FOR THE BIKER ZIP FRONT  
 PATTERN PIECE FOR BACK FACING  
 INSTRUCTIONS ON HOW TO ASSEMBLE

WHAT YOU WILL NEED:

FABRIC FOR YOUR MAIN AND FACING ZIP FRONT PIECES  
 FABRIC FOR YOUR BACK FACING  
 16" OPEN ENDED ZIP

SUGGESTED LAYOUT FOR ALL SIZES AND ALL PIECES, ON 150CM WIDE, NON DIRECTIONAL FABRIC, 200CM



PIECES CUT ON FABRICS:

1 - BIKER ZIP FRONT

CUT 2 PAIR ON MAIN OR  
 1 PAIR MAIN, 1 PAIR CONTRAST

2 - BACK FACING

CUT 1 ON FOLD ON MAIN OR  
 CUT 1 ON FOLD ON CONTRAST

When it comes to sewing the front left side panel to the shoulder yoke and side panel, you can sew this as a flat fell but it is inadvisable, zip placement differs and the overlap becomes bulky, not very easy to sew and if you make a mistake putting in your zip then you've had it.

The best way to proceed is to stitch a regular seam then create a mock flat fell by top stitching along your finished seam. This is how the following instructions will tell you to insert your zip.

## BIKER ZIP HACK - BONUS PIECE

WHEN YOU REACH STEP 5

**SEWING PIECE 10 to 8/2**

*follow these instructions:*

You will need your 2 pairs of the front zip bonus panel, the back facing piece, and your convertible collar pieces (or the band collar if you are opting for that version.)

The pieces can be cut either from same fabric or contrast.

### SEWING PIECE 10 to 8/2 RIGHT SIDE JACKET

Wrong sides together sew the biker zip panel (1) to the yoke/side/sleeve panel you've created matching the notches.

You will be pressing the side pieces over the biker zip panel, trim the biker zip panel seam and then create the overlap flat fell seam.

Baste the zip onto the outer edge of the right panel

On the left hand panel, you may find it easier if you baste your zip in place before you complete the seam, but that is personal preference.

Using a zipper foot, sew the front panel 1 to your yoke and side panel, right sides together creating a regular seam.

Press this seam in towards the side panels of your jacket and then you can create top stitching lines to the side of your zip, stitching the seam in place and maintaining the topstitching look through the jacket.

### SEWING THE FACING PIECES

Take facing pieces, 1i and 2 and sew them right sides together at the shoulder seams.

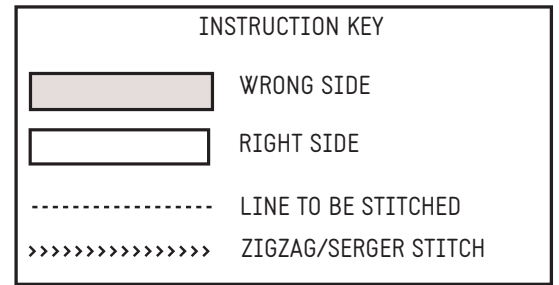
Finish the raw edges with zigzag/serger stitch and then set aside for the moment.

Continue with:

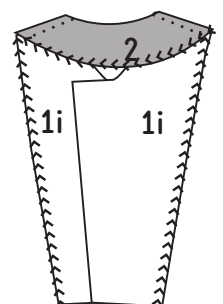
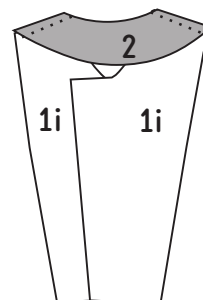
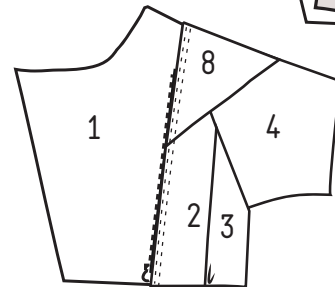
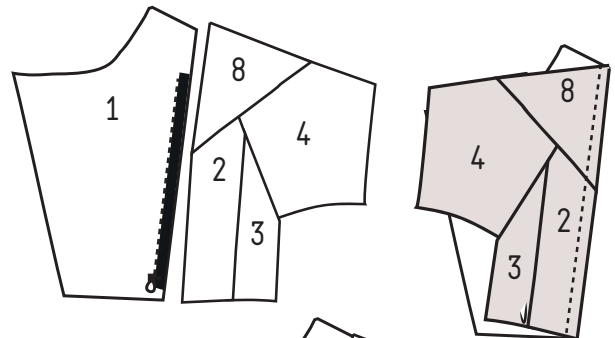
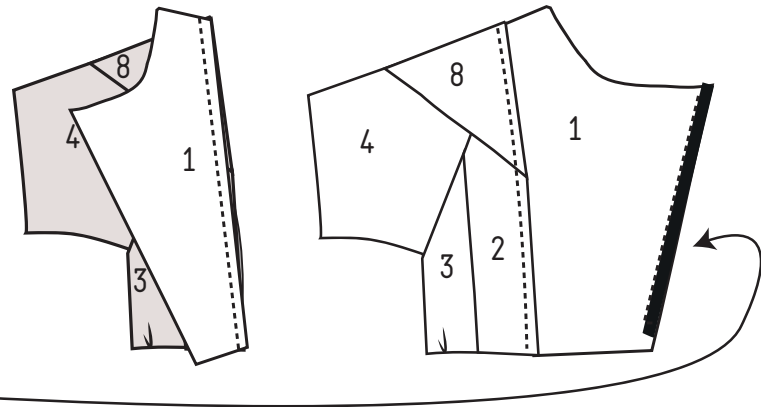
STEP SIX - ALL VERSIONS

MAKING UP

Sew your shoulder to wrist seams & sew your wrist to waist seams in the same manner indicated in the instructions and then return to the hack pack instructions for the collar.



- These pieces are sewn with a 1.5cm seam unless otherwise indicated.
- Some seams may require trimming, this is indicated in the instructions.
- Front facing piece will be referred to as 1i in instructions.



## SEWING THE COLLAR FOR THE ZIP HACK

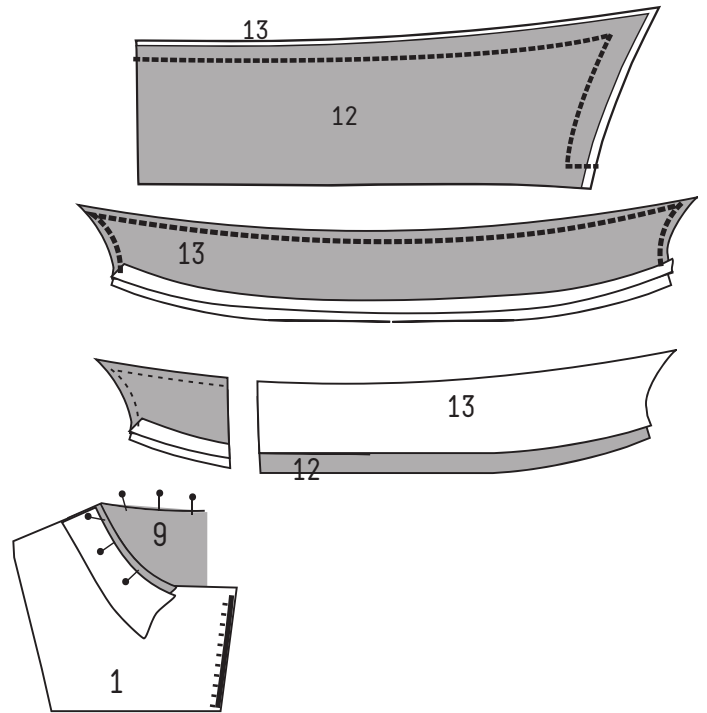
Sew around collar outer edge between the notches, leaving the lower edge open

While the collar is still inside out, fold and press up the raw bottom edge of the top collar seam 1.5cm.

Clip into seam curves and turn collar right side out and press.

Pin centre back of under collar to centre back of back piece 9, right sides together.

Pin your collar around the neckline, keeping your folded edge away from the neckline.



## ATTACHING THE FACINGS

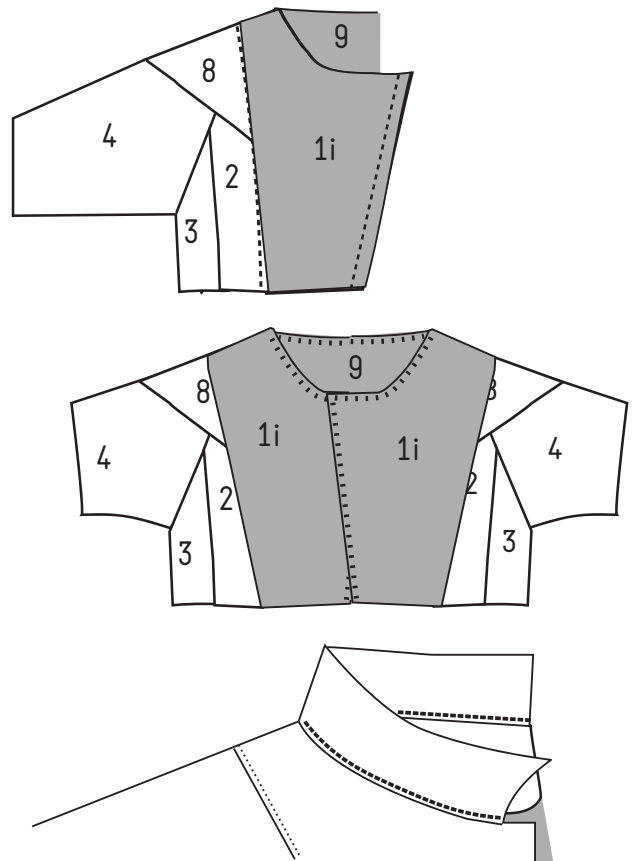
Now look out those facing pieces you sewed together.

Before you attach the full facing, sew the right panel facing to the jacket front with your zipper foot

Pin your facing pieces 1i and 2 around the outside of your jacket, right sides together. Make sure to keep that folded collar edge free from the facing.

Sew with a 1.5cm seam and once completed, clip the facing corners and clip into the curves that that when you turn it right side out and press you've got nice clean lines.

Once pressed and the right way around, you can top stitch 2/3mm along the folded collar seam line to finish the collar, keeping the upper collar in place.



---

I'm sure you're wondering if you could just sew the whole raw edge of the collar into the facings, that's what they're there for right?

Yep you could if you really want to, there is nothing stopping you doing it that way, but if you are using a thick/heavyweight fabric it'll just help reduce the bulk around the neckline to do it this way. If you'd rather just sew the whole collar into the facing then go for it!

---

CONTINUE WITH STEP EIGHT - ALL VERSIONS - SLEEVES ON p10

ALL FINISHINGS REMAIN THE SAME THOUGH YOU WILL NOT NEED TO ADD THE BUTTONS (!) OR CAPTURE THE POCKETS IN THE BUTTON STAND STITCHING.